



**NEW EXCLUSIVE
STUDY**

**medical
imaging**
BANKSTOWN

This is an ideal & effective test for:

- unexplained cough
- change in voice/hoarseness
- recurrent sinusitis and middle ear infections
- recurrent bronchitis/pneumonia
- adult-onset asthma that is unresponsive

NEW GASTROINTESTINAL REFLUX TEST

experienceinnovation

GASTROINTESTINAL REFLUX TEST

Industry leading technology paired with expert analysis ensuring your patients receive the best imaging **first time, every time.**

STUDY

Scintigraphic Reflux Study using a Nuclear Medicine scanner exclusive to Medical Imaging Bankstown. A study relevant for pharyngeal contamination and aspiration in patients with gastroesophageal reflux disease

INDICATIONS

Ideal for patients with persistent cough, recurrent sinusitis or middle ear infections, recurrent bronchitis, one sided tooth decay, pneumonia or unresponsive adult asthma

LPR SUPPORTING RESEARCH

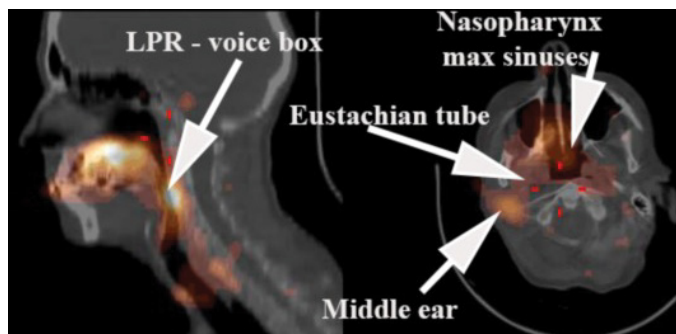
31% Laryngopharyngeal reflux patients presented with pharyngeal contamination

23% Laryngopharyngeal reflux patients presented with lung aspiration

GORD SUPPORTING RESEARCH

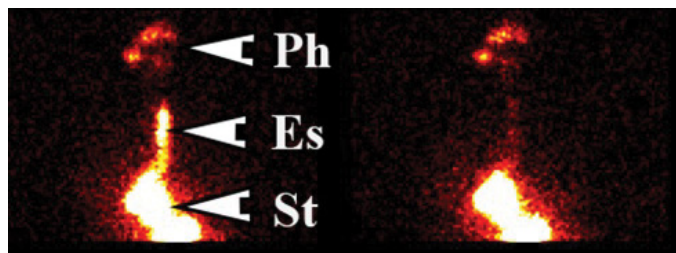
61% Gastroesophageal reflux patients presented with pharyngeal contamination

14% Gastroesophageal reflux patients presented with pulmonary aspiration

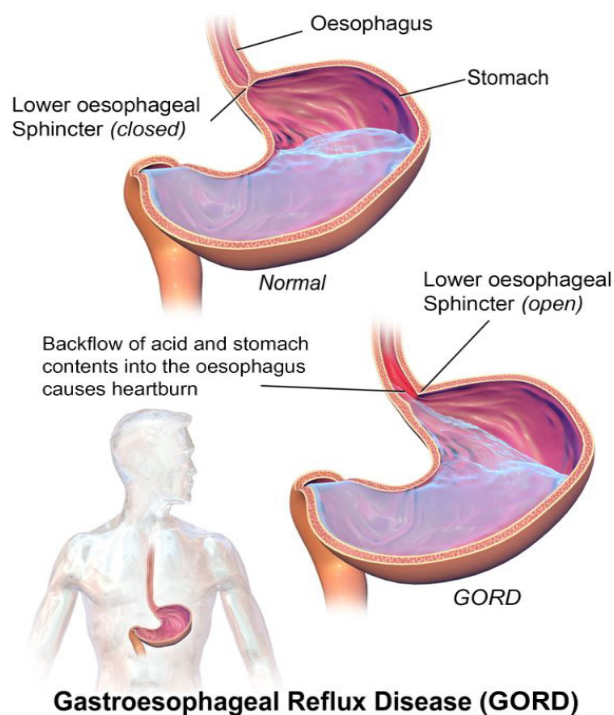


Scintigraphy in laryngopharyngeal and gastroesophageal reflux disease.

Falk G, Beattie J, ng A, Falk SE, Magee M, Burton L, Van der Wall H. World J Gastroenterol. 2015 Mar 28;21(12):3619-27.



Dynamic images of the the neck to upper abdomen in the upright and supine position with the gamma camera.



Ground Floor, 258 South Terrace
Bankstown, 2200
T. 02 8760 9100 F: 02 8760 9101

Operating Hours:
Monday - Friday 8:00am - 5:00pm
Saturday 8:30am - 12:30pm

www.imagingbankstown.com.au

AMPLE FREE PARKING AVAILABLE

Bulk Billing